

To IK1MNJ Via JA1OYY om

My Original、The Fuzzy Ant's

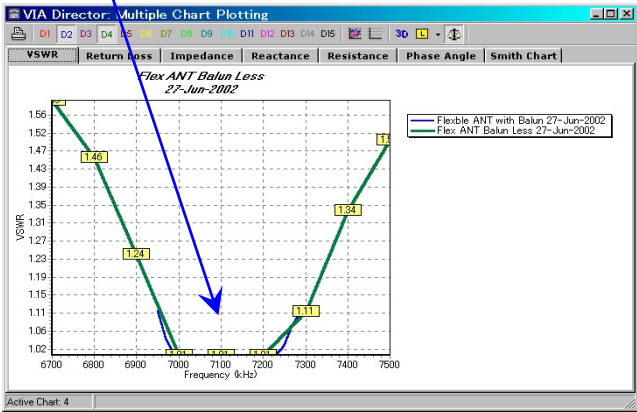
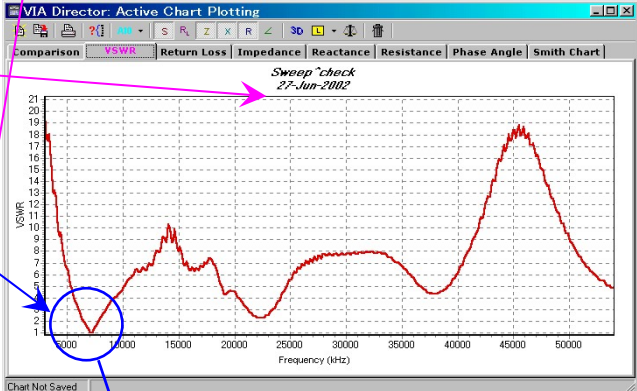
No1: The Flexible hose (For Electronics cleaner) Ant'



①: Data on "the wide frequency" are adopted first.

②: Next, it tunes around the frequency which can be used for Ham Band exactly.

③: A compact antenna for "7MHz" was constructed!



7MHz QSO ⇒ CW mode、
From JA6 to JA4•5•3•2 and HL5•1

No2: The Water in Pet bottle Ant'

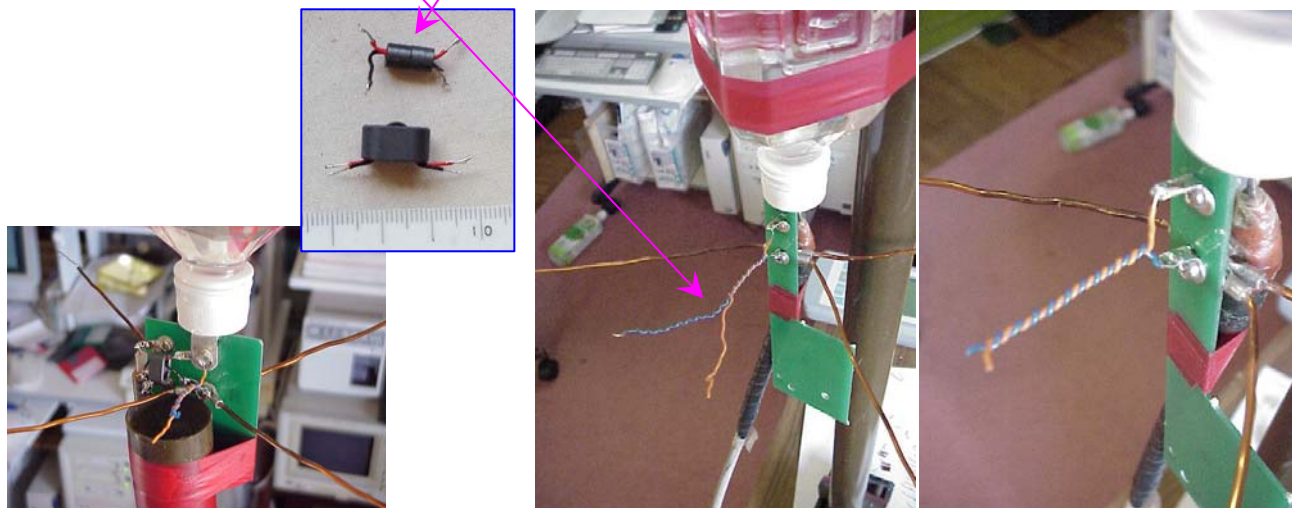
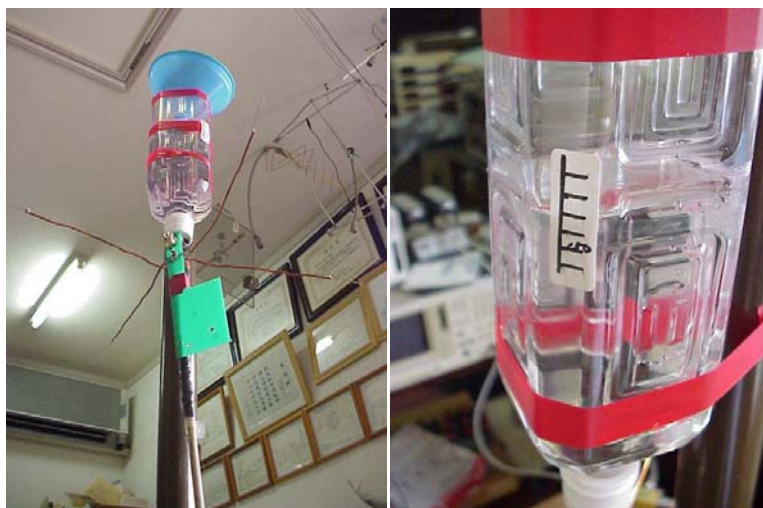
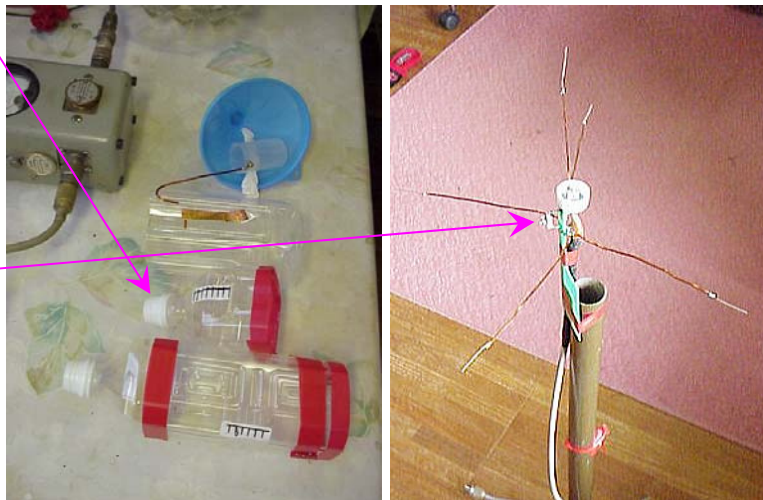
①: It prepares for Pet bottle first.

②: Next, a GP antenna is built.

③: Only a terminal is left, and a vertical element is removed.

④: Water is poured into Petbottle, and resonate

⑤: The " Twisted lead capacitor adjustment" is applied and adjusted Balun.



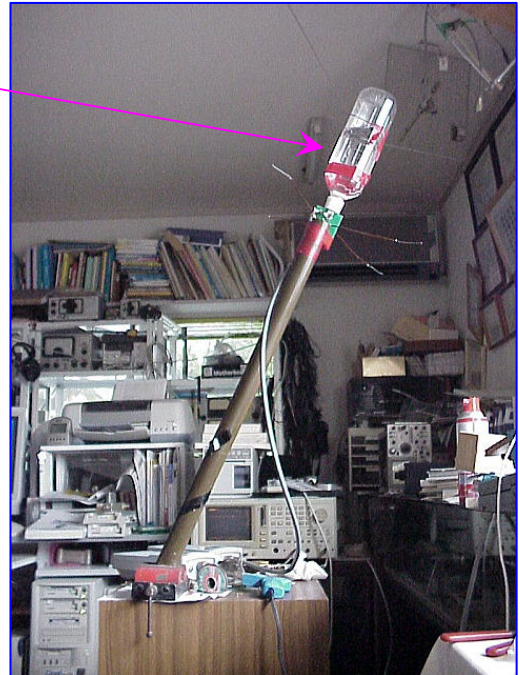
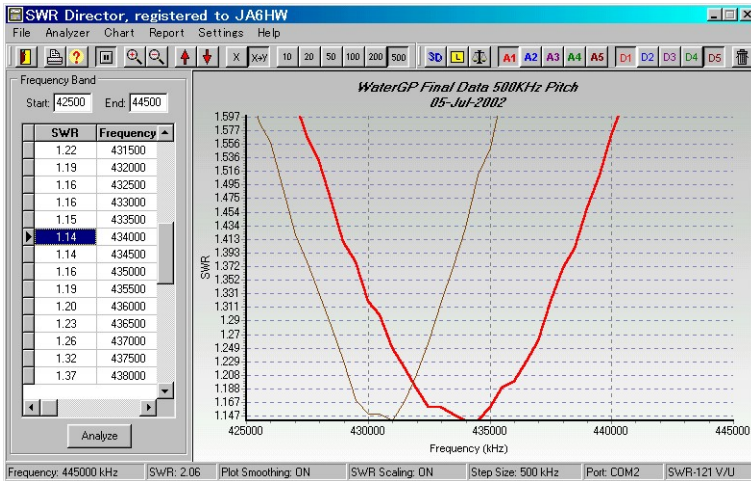
Know-How for the personal computer beginner

I have "IT-Leader No:14YKS0015" qualification authentication in Fukuoka Prefecture .

The author and editor => JA6HW: SUMII Yhoji E-Mail: ja6hw@jarl.com

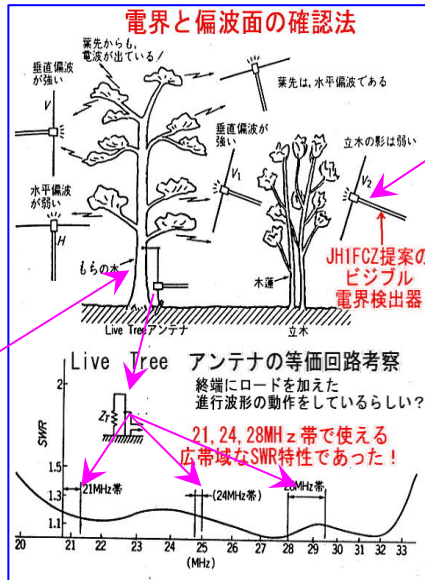
Tel & Fax 0930-22-9105. Address: 〒824-0022 Inadou 3021-15 .Yukuhashi City Fukuoka Prefecture Japan

⑥: A completed antenna for 433MHz .
QSO with FM mode of about
100Km/10W is possible.



No3: The Live tree Ant'

21MHzQSO => CW mode: BY1, VK2, YC3, etc.
28MHzQSO => CW mode: BV2, EA5, F6, K7, VK5 etc.
=> SSB mode UA9, UL7, 9V1, etc.



Visible LED type an electric field strength detector.